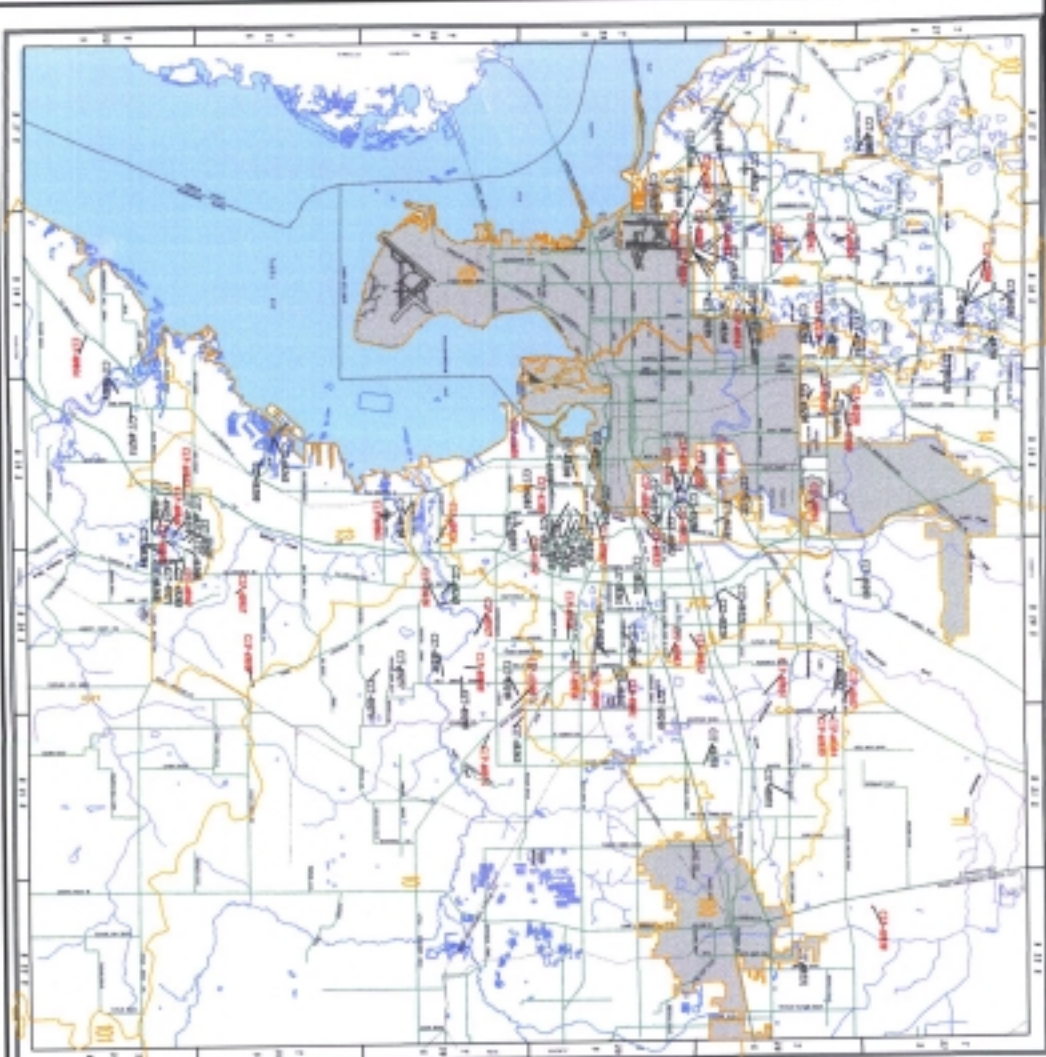





# 1998 - 2003 Stormwater C.I.P. & C.I.T. Project Location Map

March 12, 1998



1. Ebbles Ave SWMP
2. Lower Sandwater Creek SWMP
3. Pemberton Creek/Bear Creek SWMP
4. Rocky Creek/Quincy Creek SWMP
5. Little Woodley River SWMP
6. Berry Creek/Archie Creek/Porter Avenue Creek SWMP
7. Double Branch Creek SWMP
8. Conroy Creek SWMP
9. Smoker Creek SWMP
10. Auld River SWMP
11. Hillsborough River SWMP
12. Tempo Bypass Canal SWMP
13. Barrington Creek/Red Branch Creek SWMP
14. Cypress Creek SWMP
15. Shaw/Port Laine Area SWMP
16. Sandwater Creek SWMP
17. Dale Road Area SWMP
100. Areas with Incorporated Area (A) to show the shaded

-  Not within Hillsborough County SWMP Area
-  SWMP Boundary
-  C.I.T. Project Location
-  C.I.P. Project Location



**HILLSBOROUGH COUNTY**  
Florida  
**Department of Public Works**  
Engineering Division  
Stormwater Management Section

Scale: 1" = 1000'  
North Arrow