

# NORTHWEST RECLAIMED WATER MASTER PLAN

1 inch equals 2,250 feet

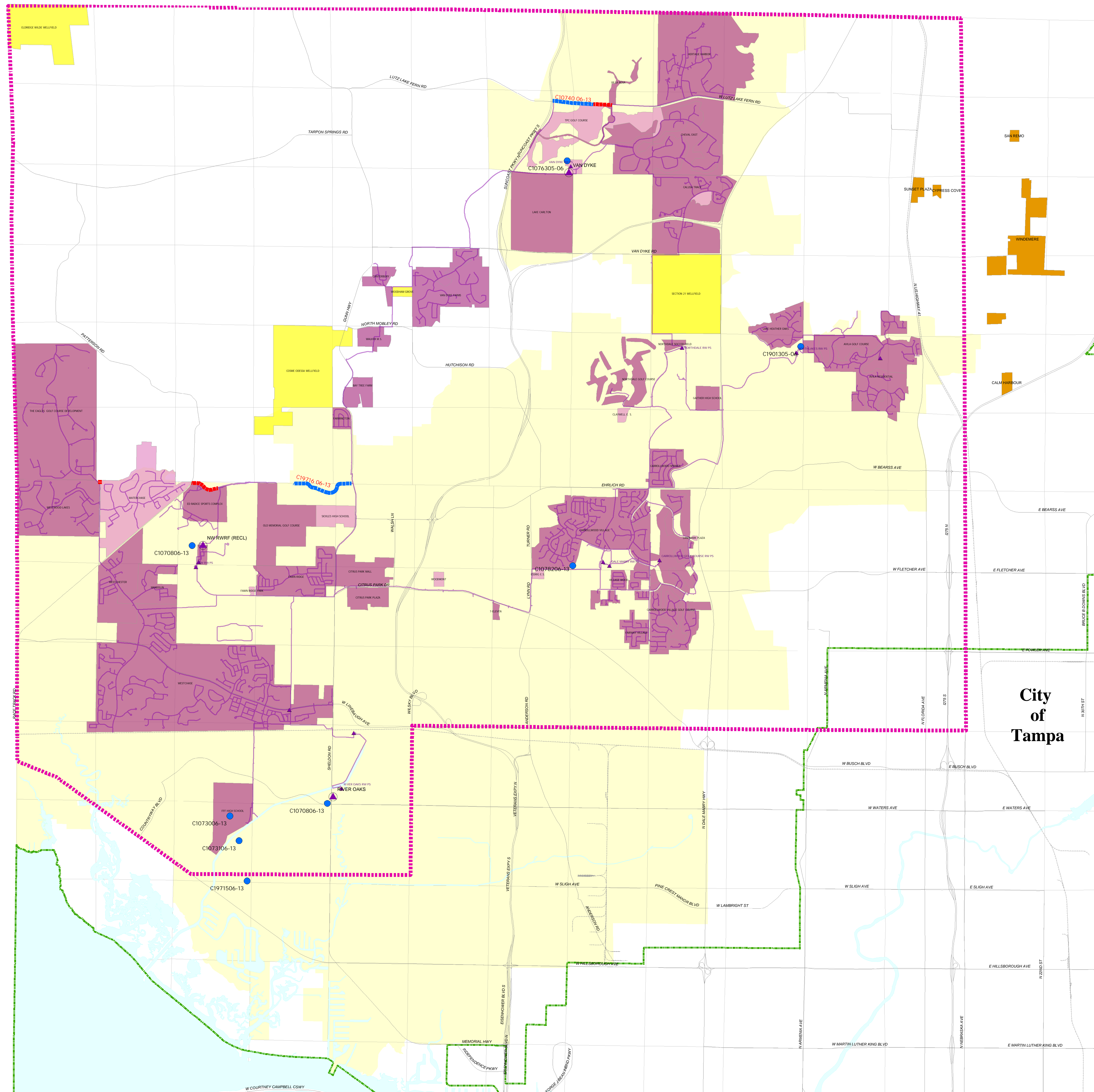
- CIP PROJECTS
- ▬▬▬▬▬▬ CIP PROJECTS
- ▬▬▬▬▬▬ PROPOSED MASTER TRANSMISSION SYSTEM
- RW Supply
- EXISTING RECLAIMED PUMP STATION
- ▬▬▬▬▬▬ EXISTING RECLAIMED WATER MAIN
- RECLAIMED WATER BOUNDARY
- ▬▬▬▬▬▬ majorrds.shp
- EXISTING REUSE SITES
- WAITING LIST
- UNDER CONSTRUCTION
- WELLFIELD SITE
- FRANCHISE AREA
- CITY LIMITS
- URBAN DEVELOPMENT AREA
- URBAN EXPANSION AREA

**APRIL 2007**

DATA SOURCES: Basemap, Roads, Parcels and Water from Hillsborough County Real Estate Department. Water and Sewer facilities from Hillsborough County Water Resource Services

ACCURACY: It Is Intended that the accuracy of the base map comply with U.S. national map accuracy standards. However, such accuracy, or any other level of accuracy is not guaranteed by Hillsborough County.

REPRODUCTION: This sheet may not be reproduced in part or full for sale to anyone without specific approval of the Hillsborough County Water Resource Services.



**City  
of  
Tampa**